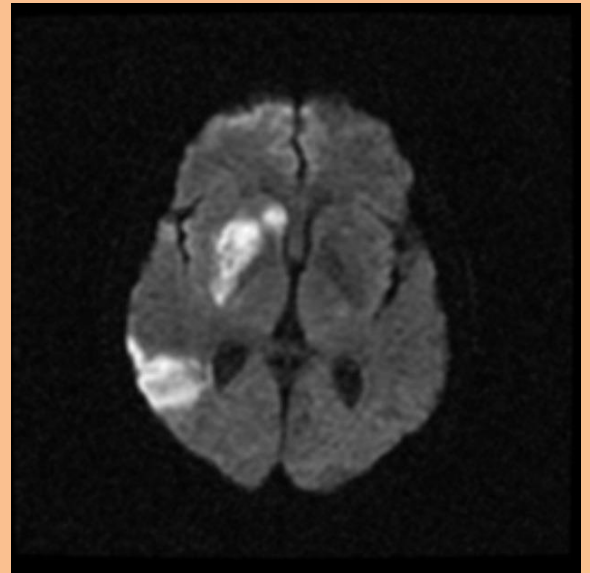
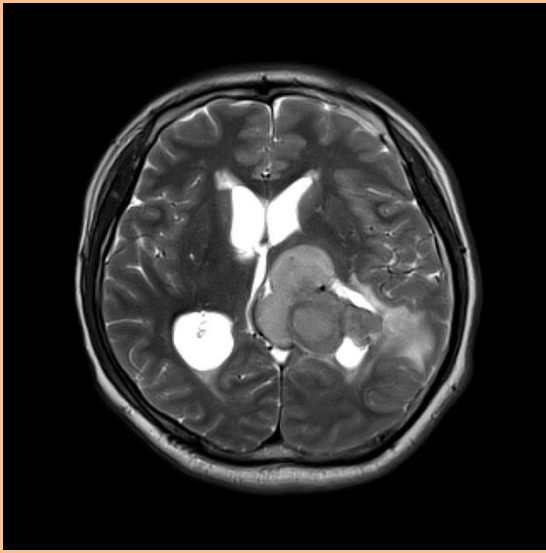




KLE ACADEMY OF HIGHER
EDUCATION & RESEARCH
BELAGAVI
Deemed-to-be-University
(Formerly known as KLE University)

DEPARTMENT OF RADIO-DIAGNOSIS



Value Added Course

IMAGING IN NEUROLOGY

The Department of Radio-diagnosis, Jawaharlal Nehru Medical College, KLE Academy of Higher Education and Research, Belagavi has been in the forefront in conducting Value Added Course in "Imaging in Neurology.

The main aim of the course is to train the participants in the skills and knowledge needed to form an accurate diagnosis in the field of neuro imaging and further assist the clinicians for appropriate treatment.

Objectives of the course

- **To detect various neurological pathologies**

Target Participants

General Medicine PGs, General Surgery PGs, Neuro Medicine PGs, Neuro Surgery PGs.

Duration of Course: 16 hours

Course Content includes faculty lectures and demonstration lectures in:

- **Basic neuroanatomy in X-ray, CT and MRI**
- **Neonatal Neuro-sonography**
- **Imaging in trauma and non-traumatic haemorrhage**
- **Imaging in stroke and metabolic disorders.**
- **Imaging in common CNS infections, inflammation and demyelinating diseases**
- **Imaging in common CNS neoplasms**
- **Basic neuroanatomy in CT/MRI angiography.**
- **Introduction to neuro-vascular Interventional radiology**

**Department of Radio-diagnosis
J. N. Medical College, KAHER, Belagavi
KLE Dr.Prabhakar Kore Hospital & MRC
Belagavi
Phone: 0831-2551163
[Email:kleradiologypgs@gmail.com](mailto:kleradiologypgs@gmail.com)**